

Studying Social Inequality with Data Science

INFO 3370 / 5371
Spring 2023

Welcome

Each table has an activity.

Go ahead and begin as you arrive!

The following figures are taken from:

- ▶ [Piketty & Saez \(2014\)](#)
- ▶ [U.S. Census Bureau \(2022\)](#)

Income inequality in Europe and the United States, 1900–2010

Share of top income decile in total pretax income

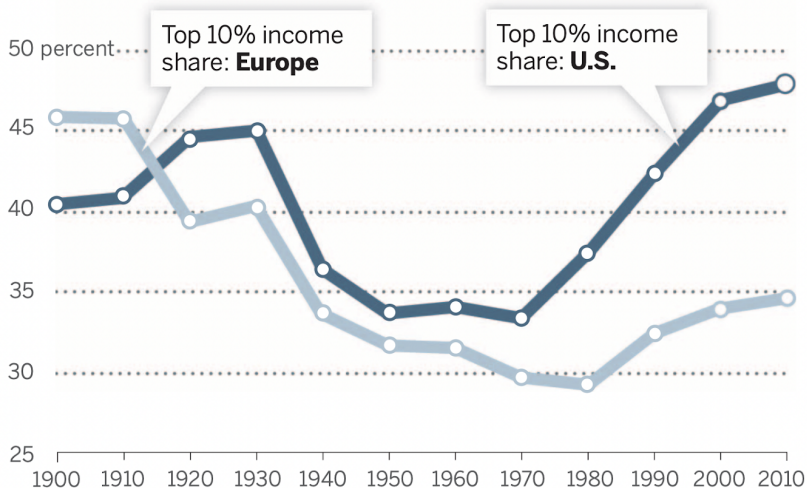
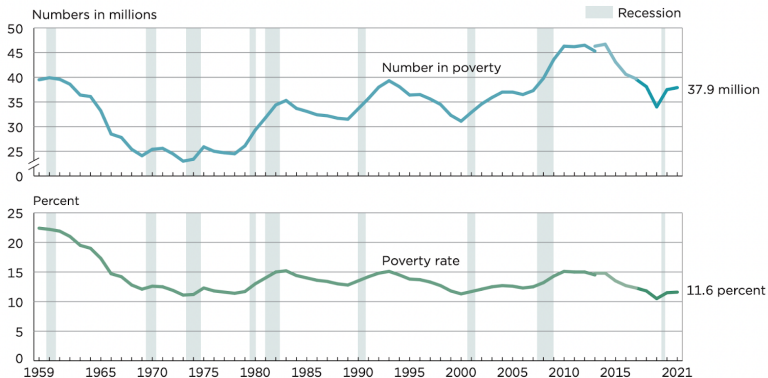


Figure 1.
Number in Poverty and Poverty Rate Using the Official Poverty Measure: 1959 to 2021



Note: Population as of March of the following year. The data for 2017 and beyond reflect the implementation of an updated processing system. The data for 2013 and beyond reflect the implementation of the redesigned income questions. Refer to Table A-4 for historical footnotes. The data points are placed at the midpoints of the respective years. Information on recessions is available in Appendix D. Information on confidentiality protection, sampling error, nonsampling error, and definitions is available at <https://www2.census.gov/programs-surveys/cps/techdocs/cpsmar22.pdf>.

Source: U.S. Census Bureau, Current Population Survey, 1960 to 2022 Annual Social and Economic Supplements (CPS ASEC).

Income inequality in Europe and the United States, 1900–2010

Share of top income decile in total pretax income

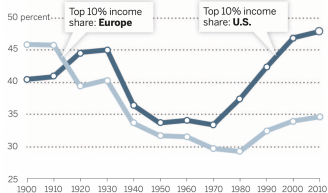
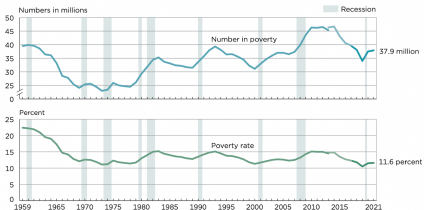


Fig. 1. Income inequality in Europe and the United States, 1900 to 2010.

The share of total income accruing to top decile income holders was higher in Europe than in the United States from 1900 to 1910; it was substantially higher in the United States than in Europe from 2000 to 2010. The series report decennial averages (1900 = 1900 to 1909, etc.) constructed using income tax returns and national accounts. See (24), chapter 9, Fig. 9.8. Series available online at piketty.pse.ens.fr/capital21c.

Figure 1. Number in Poverty and Poverty Rate Using the Official Poverty Measure: 1959 to 2021



Note: Population as of March of the following year. The data for 2017 and beyond reflect the implementation of an updated processing system. The data for 2013 and beyond reflect the implementation of the redesigned income questions. Refer to Table A-4 for historical footnotes. The data points are placed at the midpoints of the respective years. Information on recessions is available in Appendix D. Information on confidentiality protection, sampling error, nonsampling error, and definitions is available at <https://www2.census.gov/programs-surveys/cps/techdoc/cpsmar22.pdf>. Source: U.S. Census Bureau, Current Population Survey, 1960 to 2022 Annual Social and Economic Supplements (CPS ASEC).

Teaching team



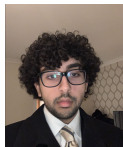
Ian Lundberg



Federica Bologna



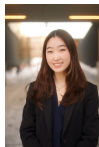
Abby
Sachar



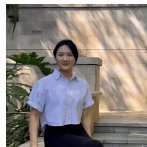
Amaan
Rehan



Chase
Young



Elizabeth
Moon



Shirley
Zhang

What will we do in this course?

info3370.github.io